

**TENT AREAS**

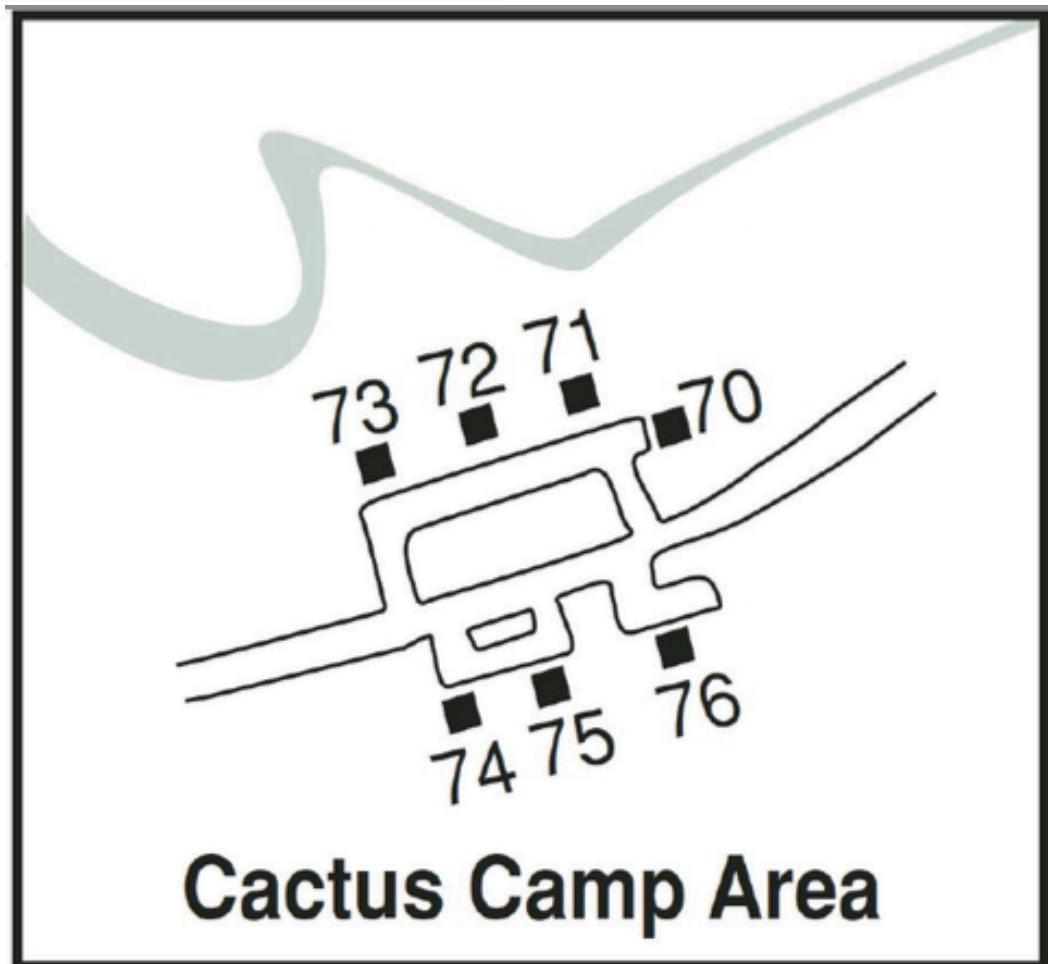
**Shade Shelters**

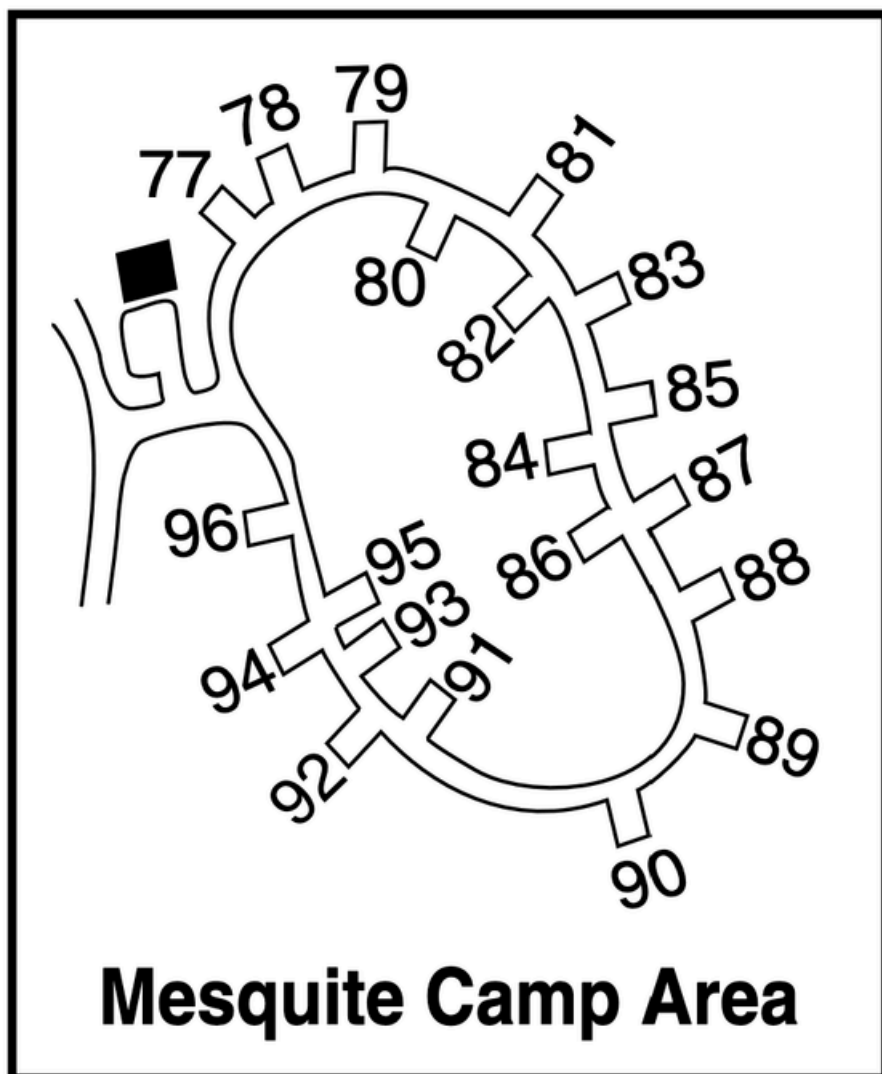
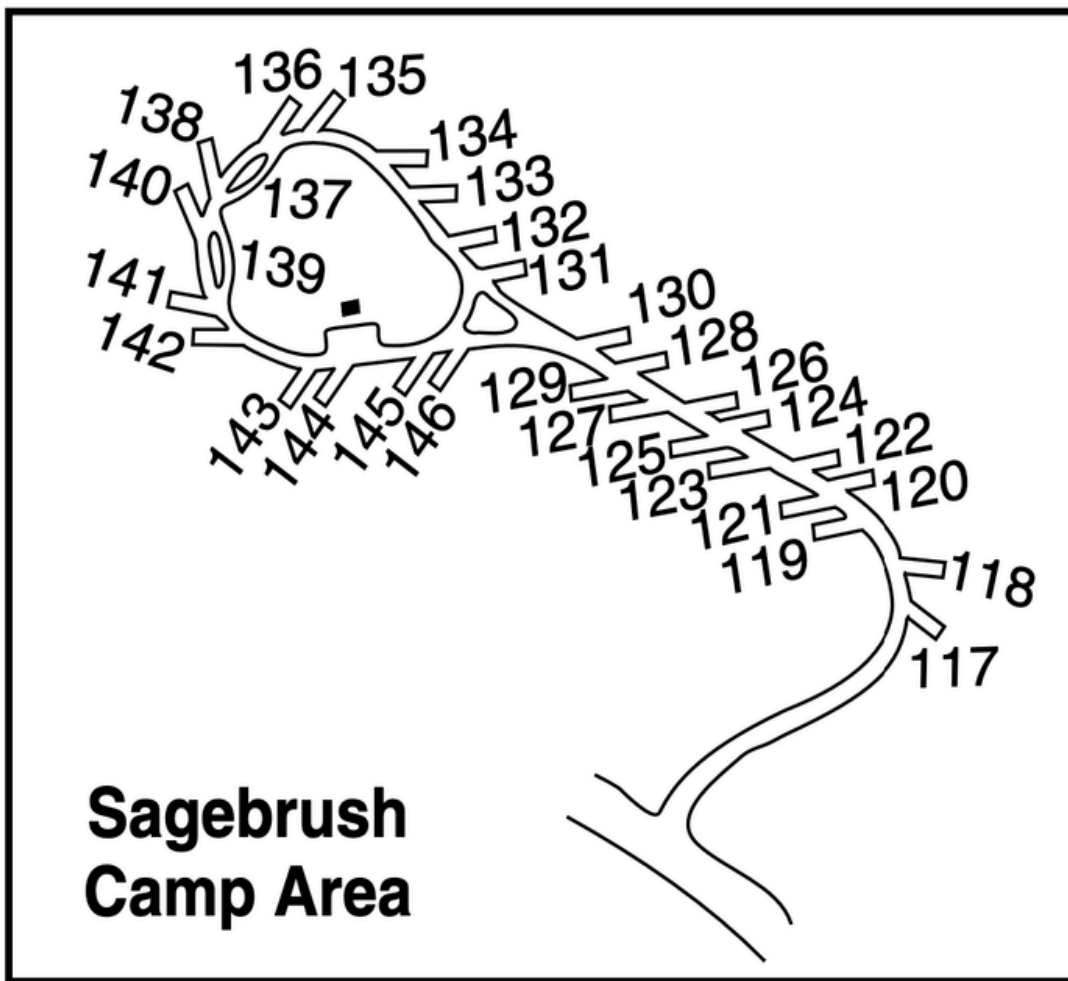
**Water Hookups**

**NO Electricity**

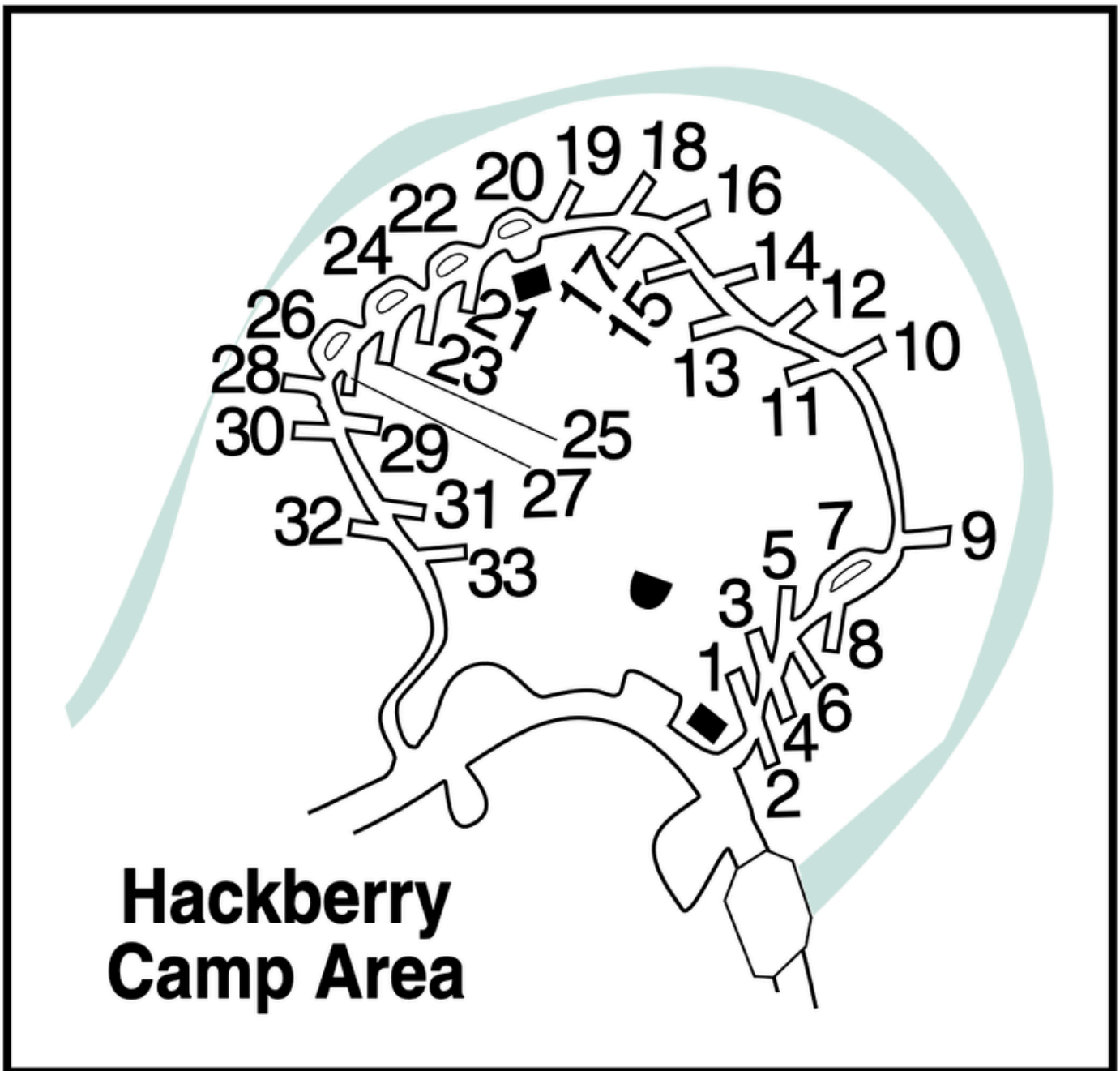
**Can use a generator**

**CACTUS**  
 This camp area is not on the state park's map. It is located between Fortress Cliff & Mesquite Campgrounds





**30-amp &  
50-amp  
Water  
Hookups in  
both  
Campgrounds**



**30-amp & Water Hookups**



## HACKBERRY TENT AREA

- General Admission Style Camping
- **DO NOT DRIVE VEHICLES INTO THIS AREA**
- No Fire Rings, Electricity, or Water Provided
- Please move your vehicle to an open spot on the road, at GSL Parking Lot, or to Pioneer Amphitheatre Parking Lot



## **LONESTAR TENT AREA**

- General Admission Style Camping
- 1 Large Fire Pit in this Area
- **DO NOT DRIVE VEHICLES INTO THIS AREA**
- No Fire Rings, Electricity, or Water Provided
- Please move your vehicle to an open spot on the road, at GSL Parking Lot, or to Pioneer Amphitheatre Parking Lot
- You can place tents inside the amphitheater area as well as basically anywhere in this general vicinity



**NO NEUTRAL  
PIT SETUPS  
UNTIL 4PM ON  
THURSDAY**

**\*Except for MTB Top  
Fundraiser from  
previous year**

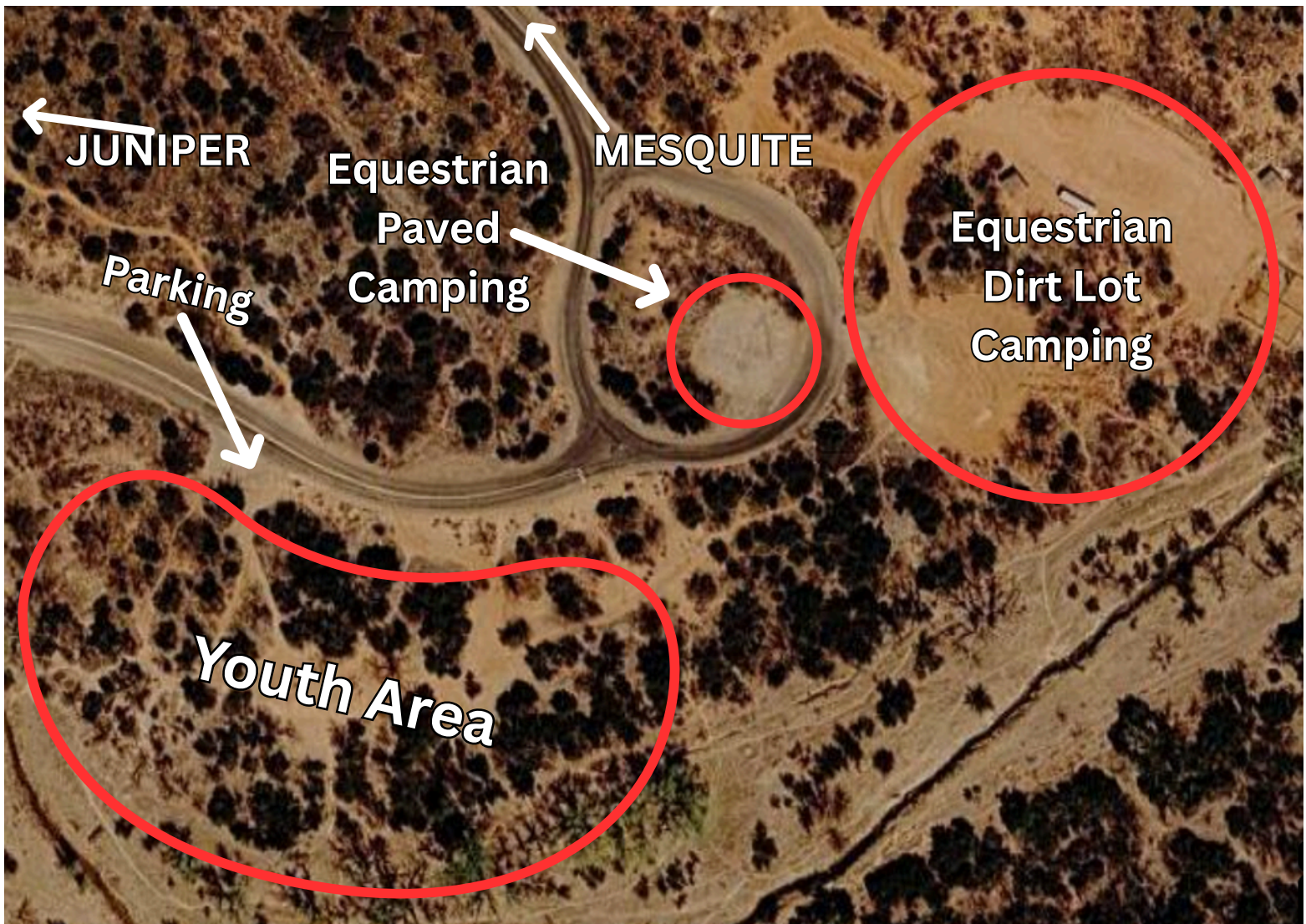
# **CHINABERRY / SOAPBERRY DAY USE**

**No vehicles allowed except for those in the  
assigned spots**



## **Givens, Spicer, Lowry Trailhead Parking Lot**

- Located across from Hackberry
- Assigned Parking spots
- 1 Parking spot per assignment
- These will be marked with signs for you/  
your team

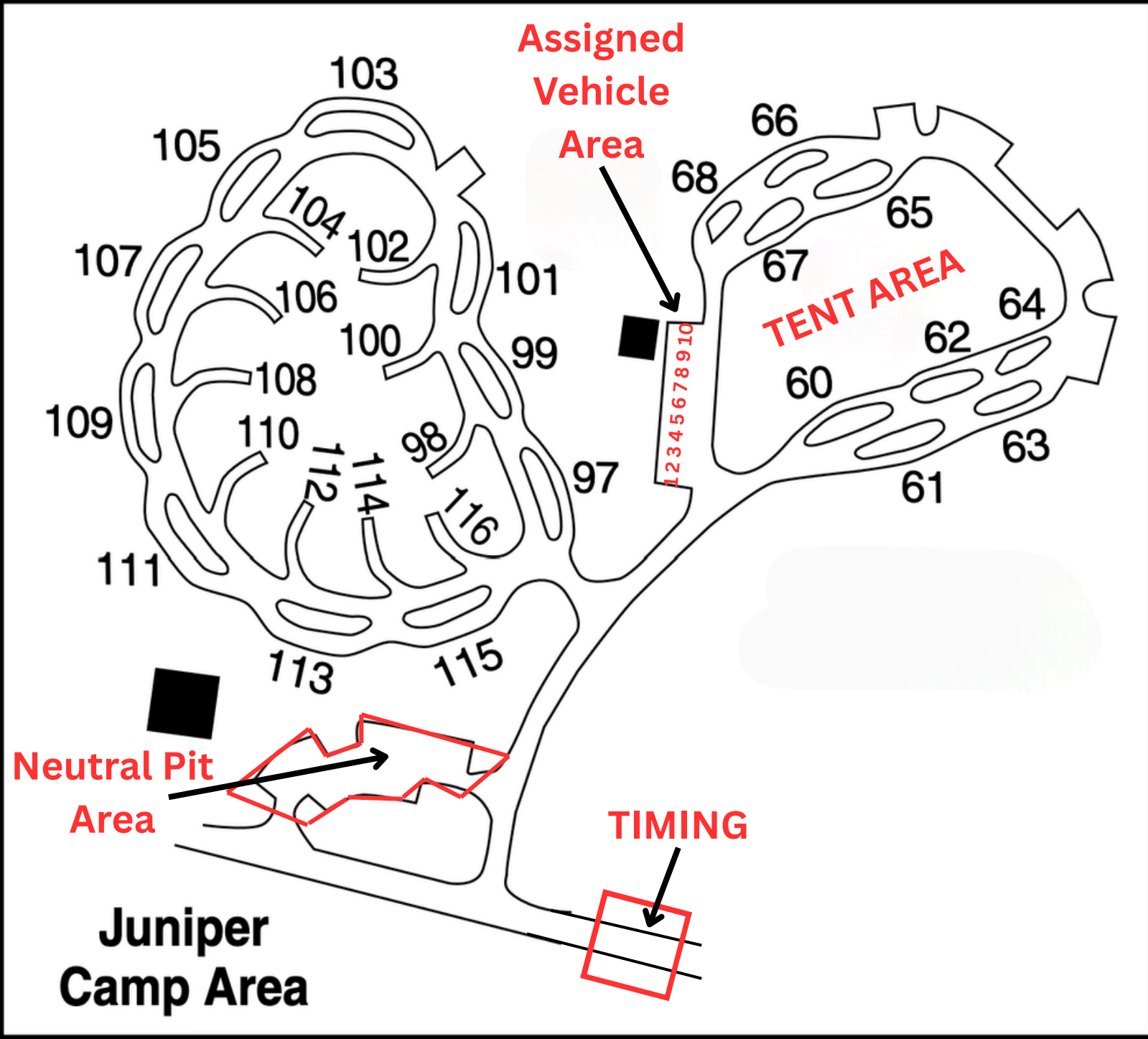


## **EQUESTRIAN AREAS**

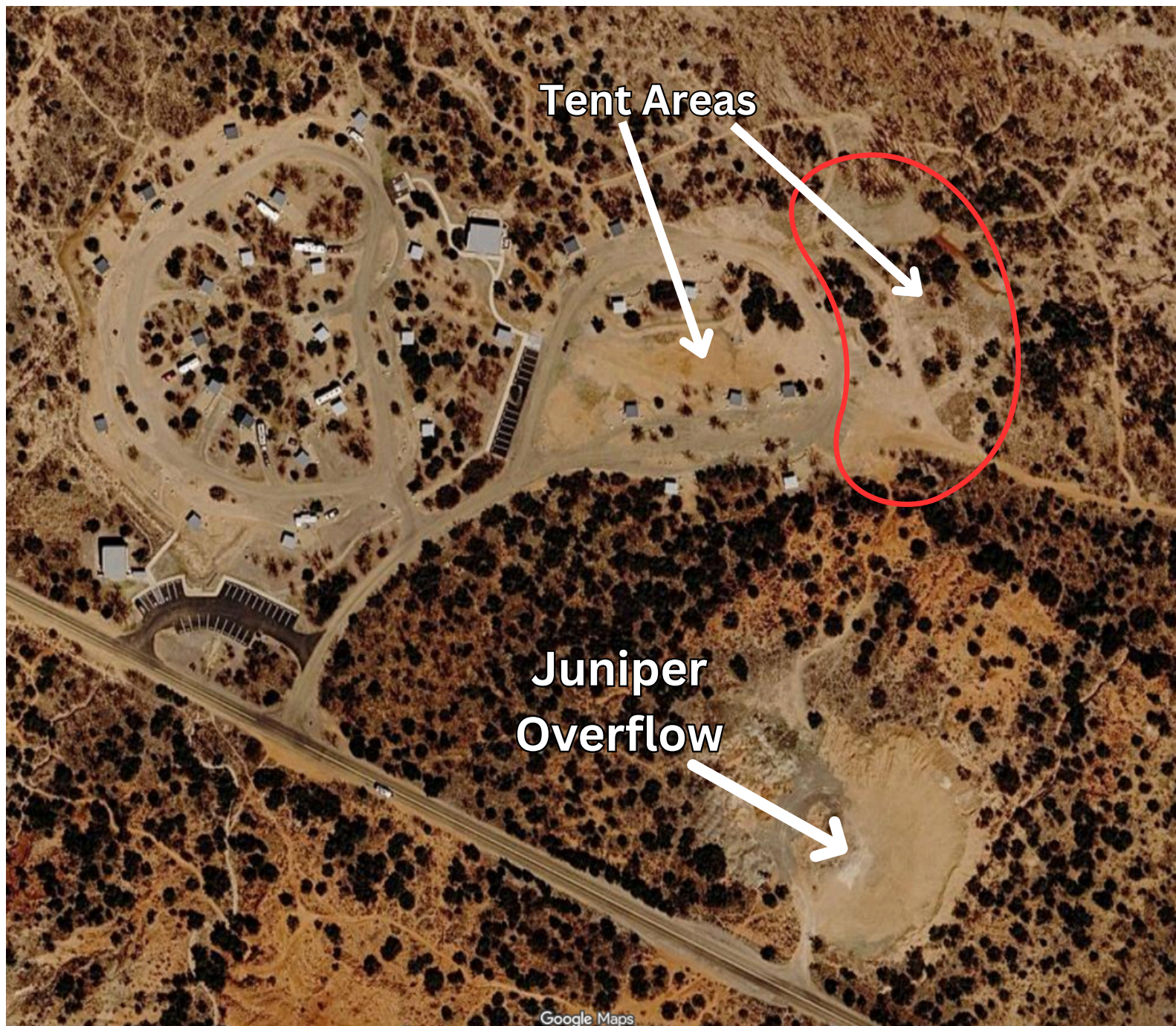
- No fire pits are provided in these areas
- General Admission Style Camping
- No Electricity or Water

## **YOUTH CAMPING AREA**

- 1 or 2 fire pits are provided in this area
- General Admission Style Camping
- Parking available at the entrance
- No Electricity or Water

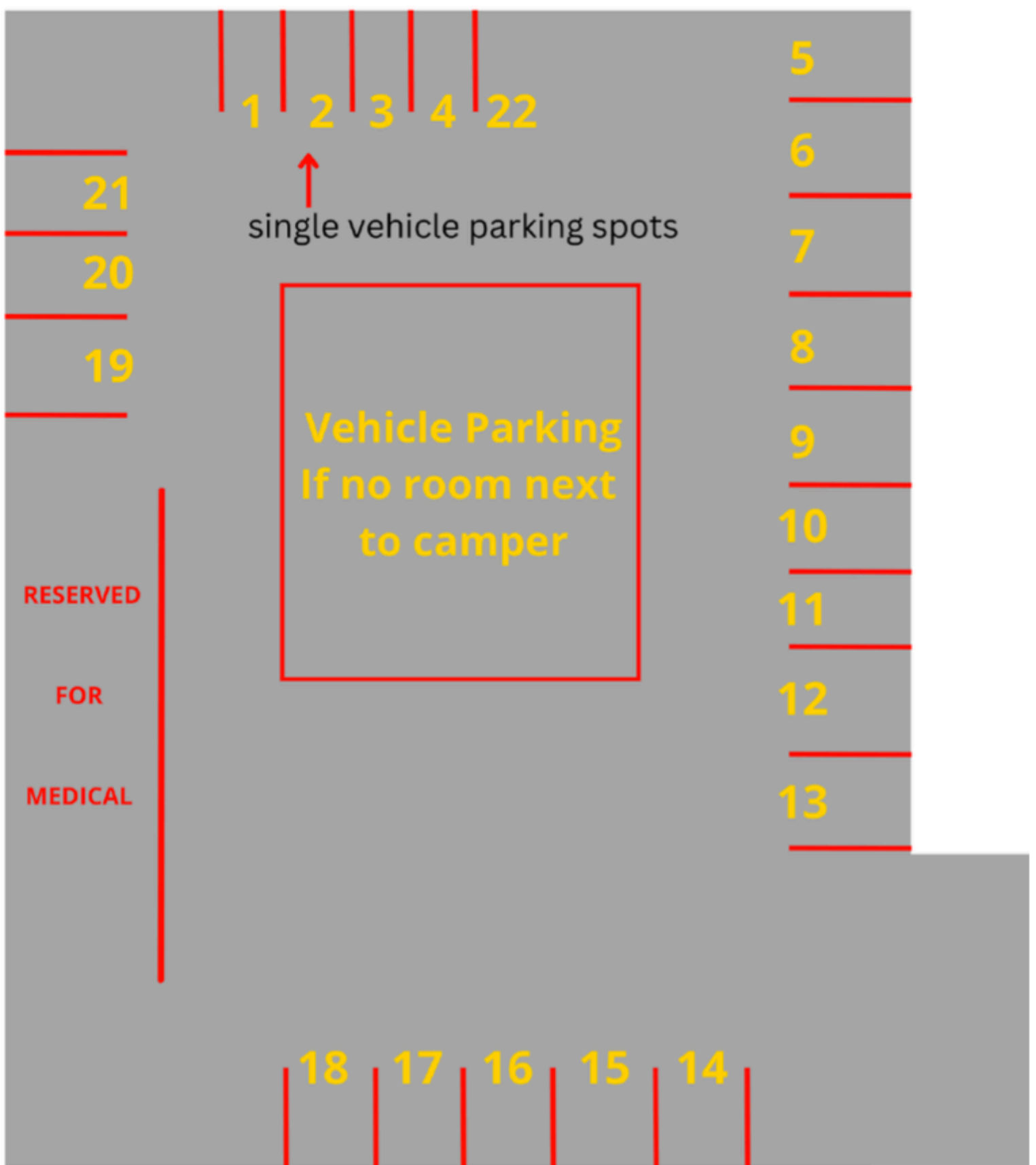


- Tent area is General Admission Style Camping
- NO NEUTRAL PIT SET UPS UNTIL 4 PM ON THURSDAY - \*Except for Road Top Fundraiser from previous year\*



# **JUNIPER OVERFLOW & TENT AREAS**

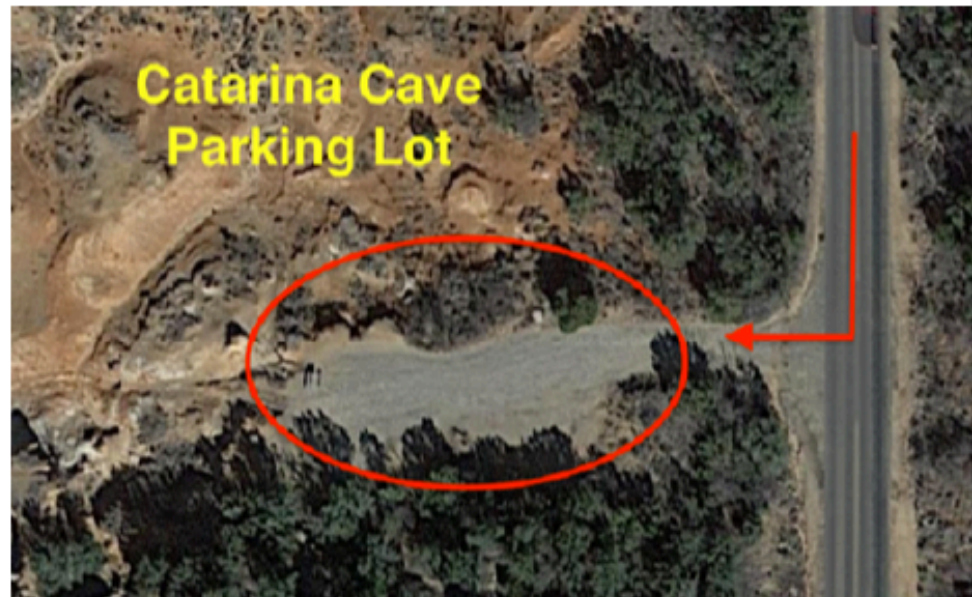
- No Fire Pits, Electricity, or Water Provided
- General Admission Style Camping / Parking



# Lighthouse Parking Lot

Each RV spot (5-21) is 2 parking spots wide

These spots are available for Fri & Sat Nights only



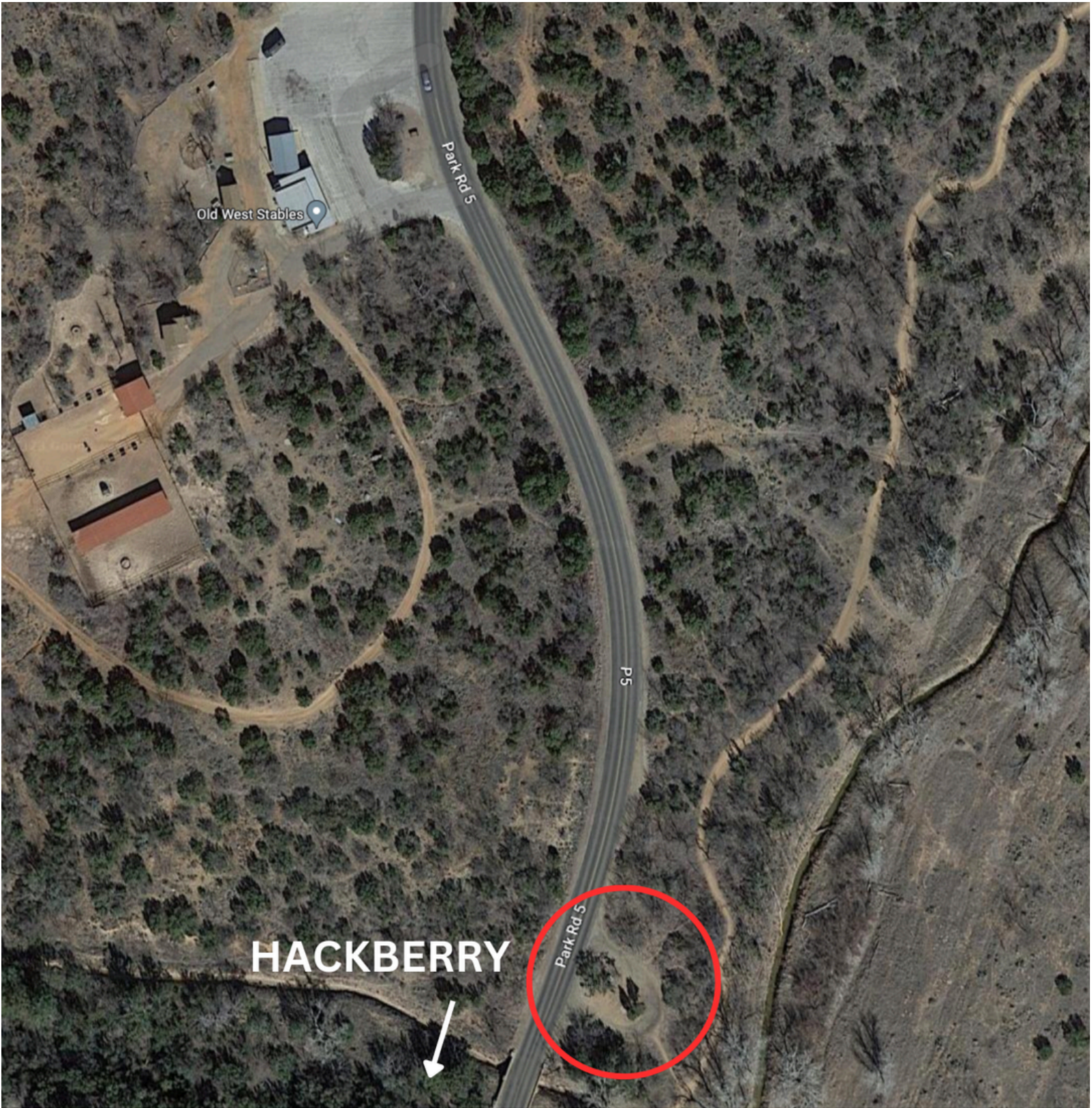
## Catarina Cave Parking Lot

This is located just past the Old West Stables.

There will be 4 vehicles parked in this parking lot.

Please allow space for each vehicle to have a parking spot.

There are no fire rings, electricity, or water hookups here.



## **PULL OFF AREA CAMPING SPOT**

No hookups or fire ring

Located between the Old West Stables & Catarina Cave Parking Lot