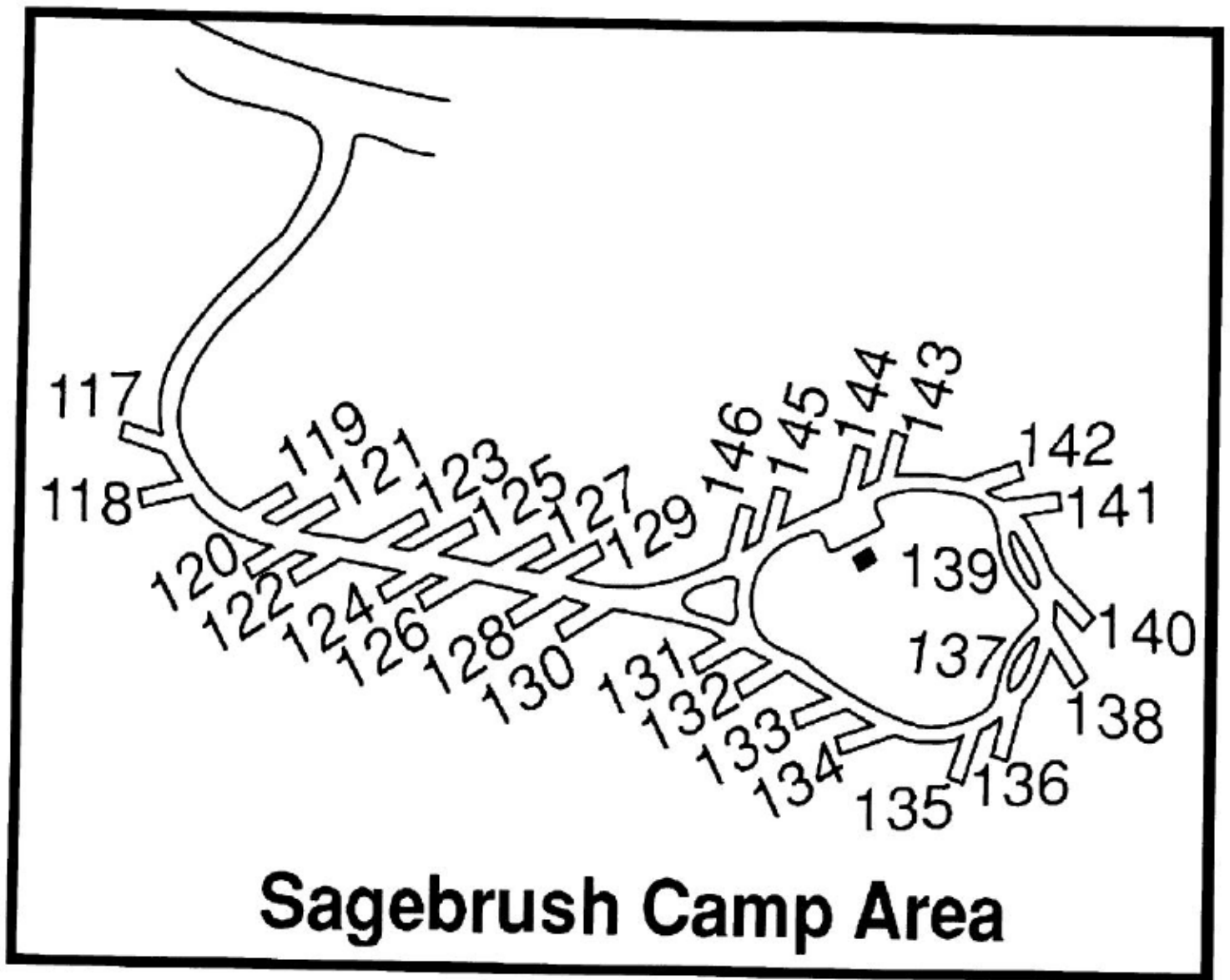
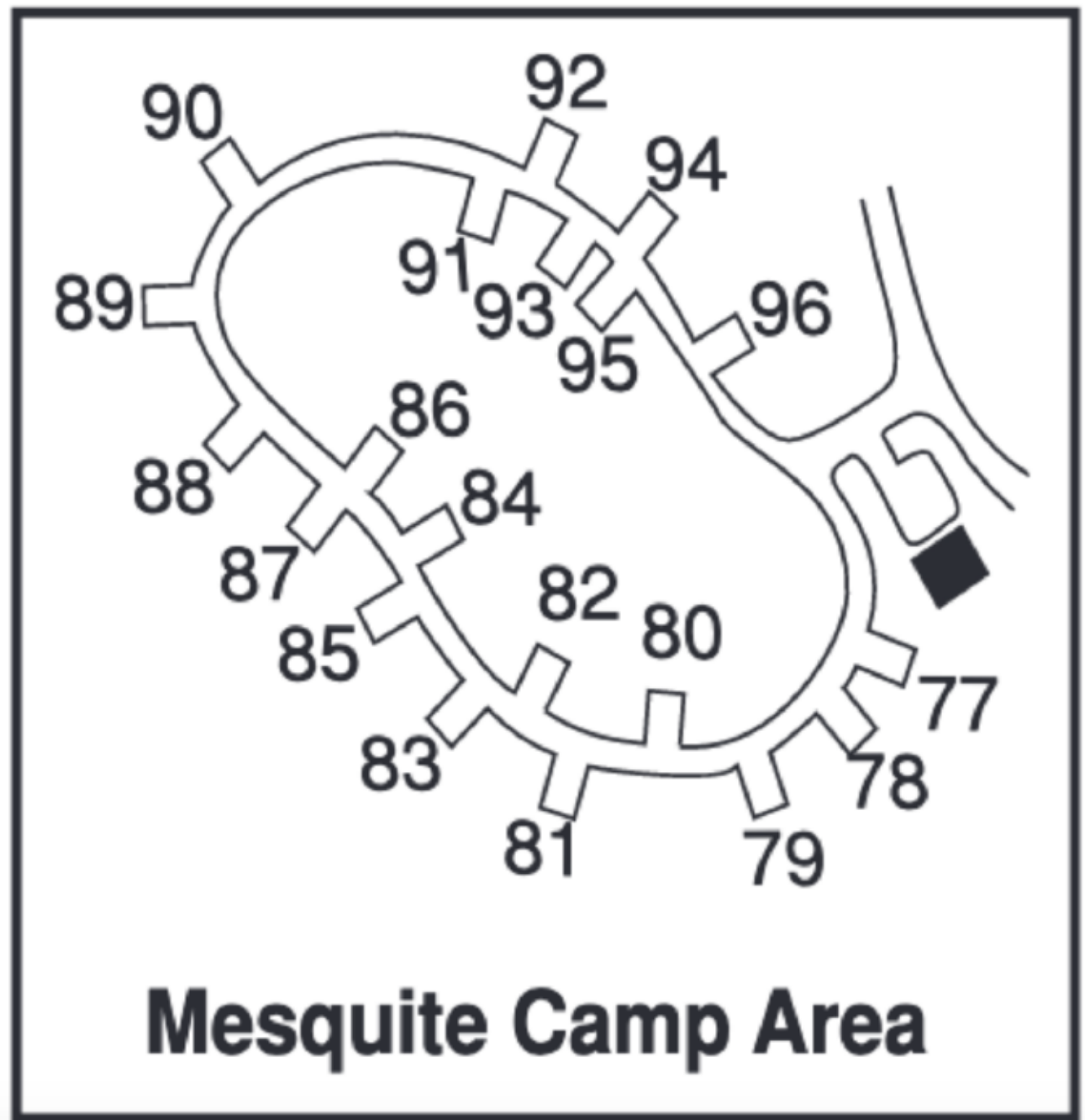


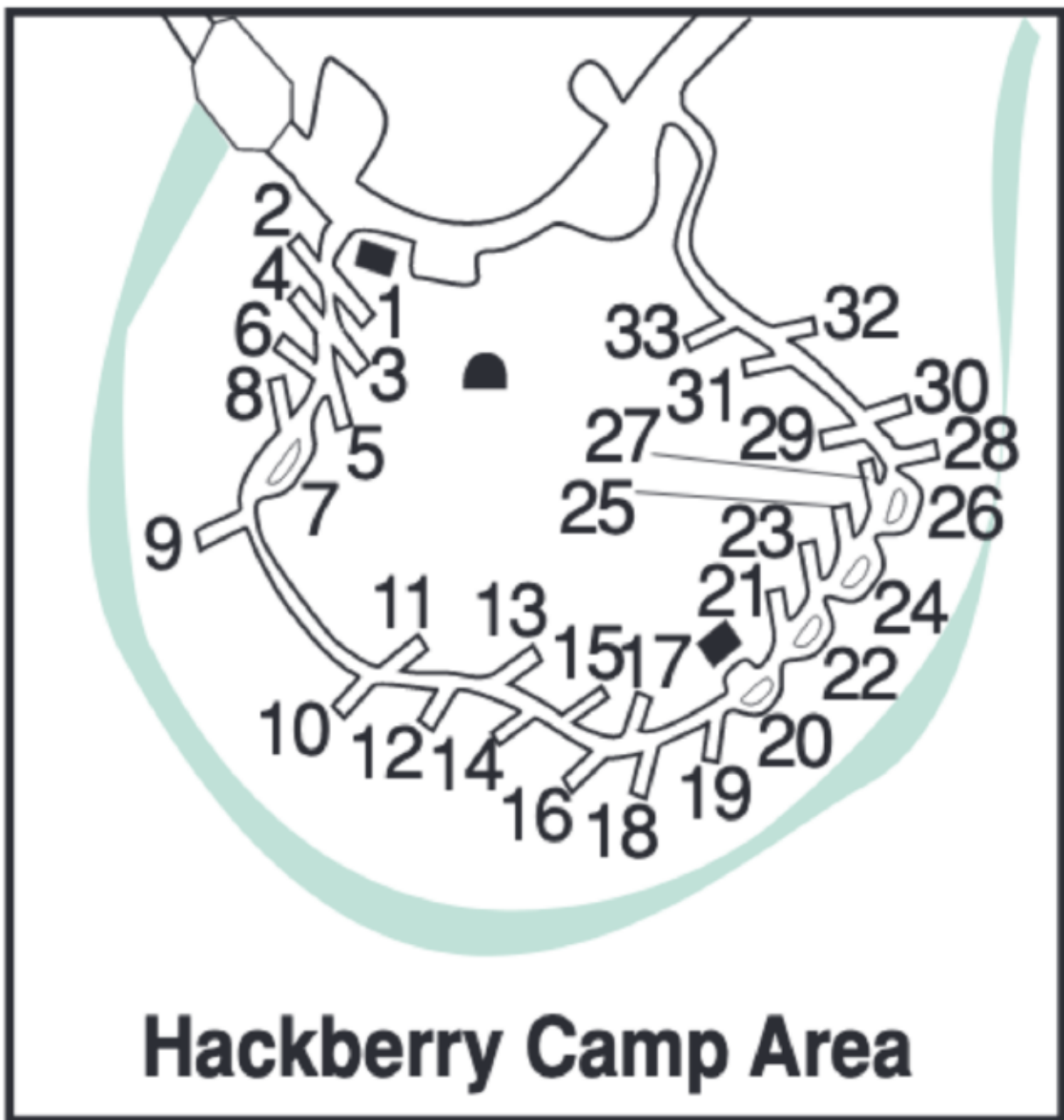
Water is available at campsites in both Camp Areas



30-amp/50-amp + Water Campsites



30-amp/50-amp + Water Campsites



30-amp + Water Campsites



HACKBERRY TENT AREA

(No fire rings in this area)

General Admission Style Camping – Choose your site upon arrival

DO NOT DRIVE VEHICLES IN THIS AREA

Please move your vehicle to either the Mack Dick Pavilion or a parking lot nearby.



LONESTAR TENT AREA

(1 fire pit in this area)

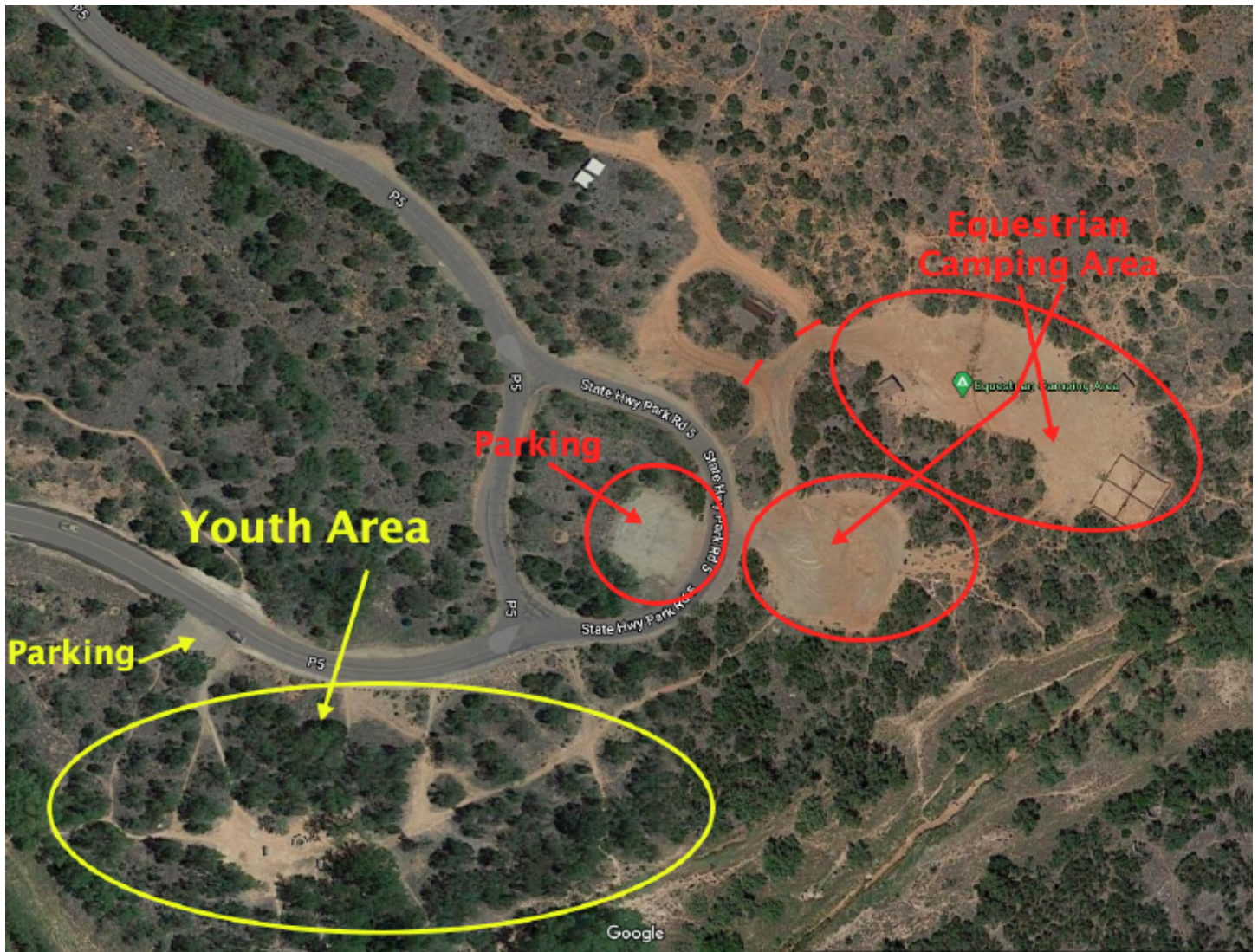
General Admission Style Camping – Choose your site upon arrival

DO NOT DRIVE VEHICLES IN THIS AREA

Please move your vehicle to either the Mack Dick Pavilion or a parking lot nearby.

You can place tents inside the amphitheater area as well as basically anywhere in this general vicinity.

[illegible]



LOCATED JUST PAST MESQUITE CAMPGROUND

EQUESTRIAN CAMPING AREA

(No fire pits in this area)

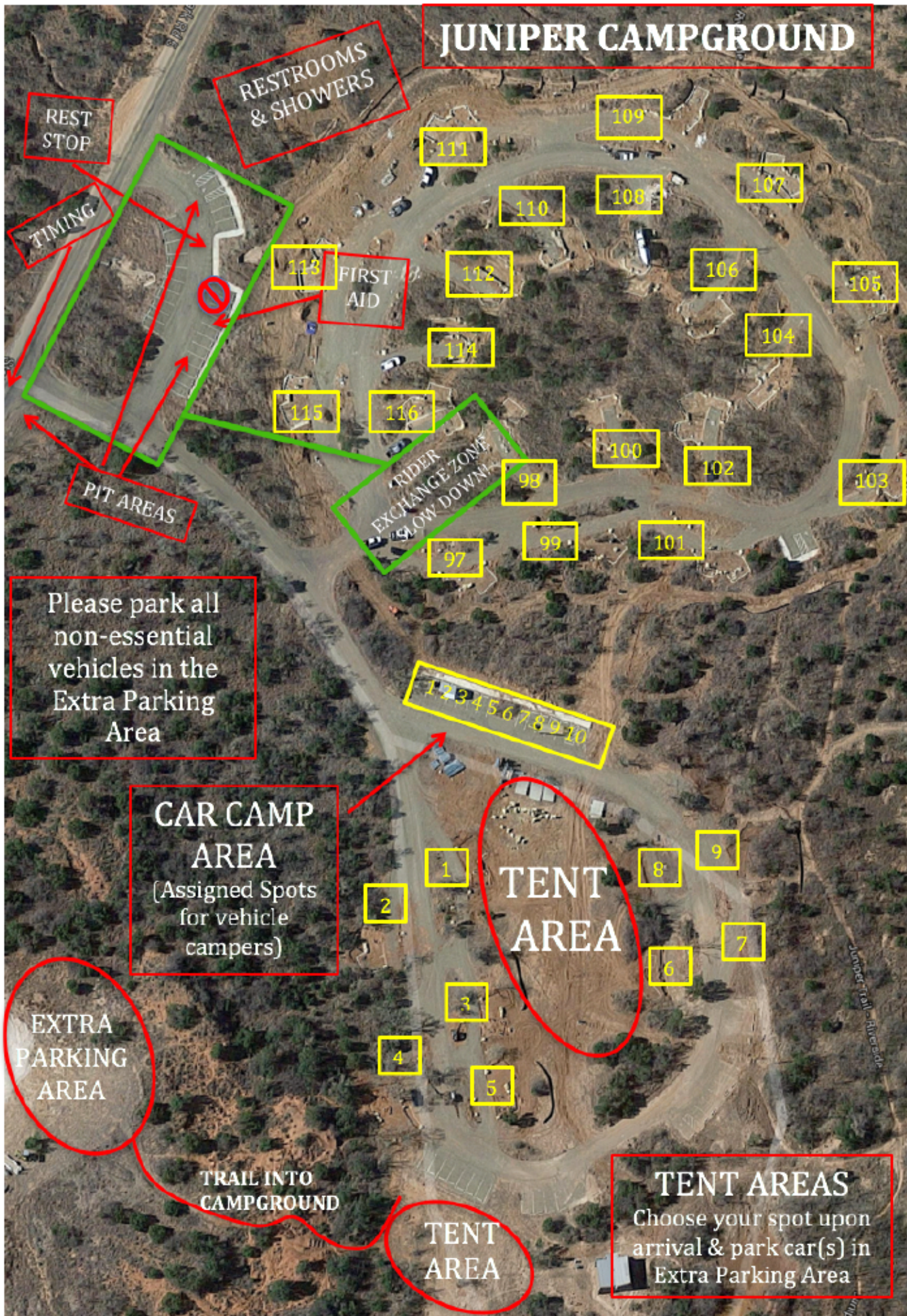
General Admission Style Camping – Choose your site upon arrival
Additional Parking across the street

YOUTH CAMPING AREA

(1 or 2 fire pits in this area)

General Admission Style Camping – Choose your site upon arrival
Parking available at the entrance

JUNIPER CAMPGROUND



Please park all non-essential vehicles in the Extra Parking Area

CAR CAMP AREA
(Assigned Spots for vehicle campers)

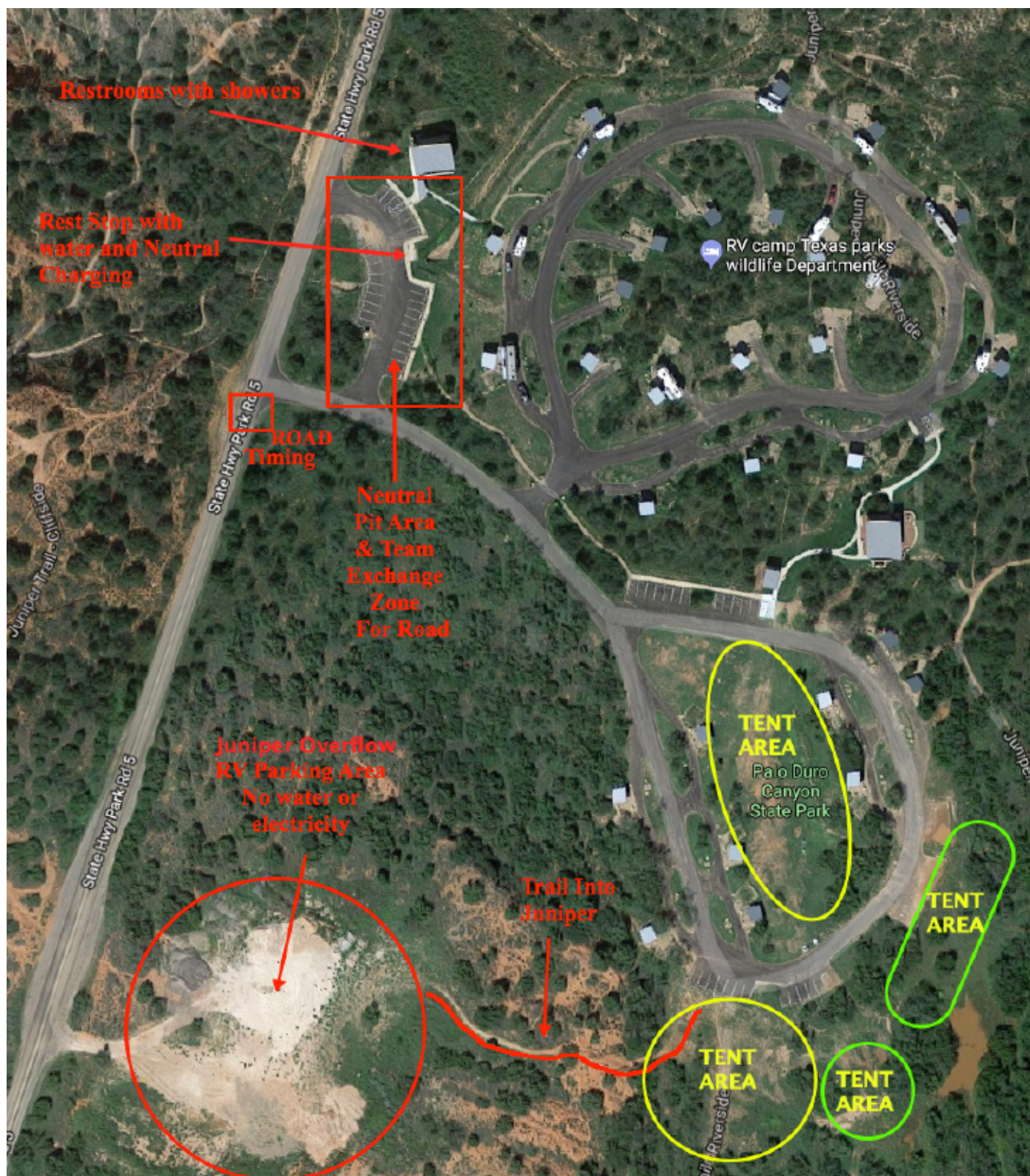
EXTRA PARKING AREA

TRAIL INTO CAMPGROUND

TENT AREA

TENT AREAS

Choose your spot upon arrival & park car(s) in Extra Parking Area



JUNIPER TENT & JUNIPER OVERFLOW AREAS

(Just another view of this area)

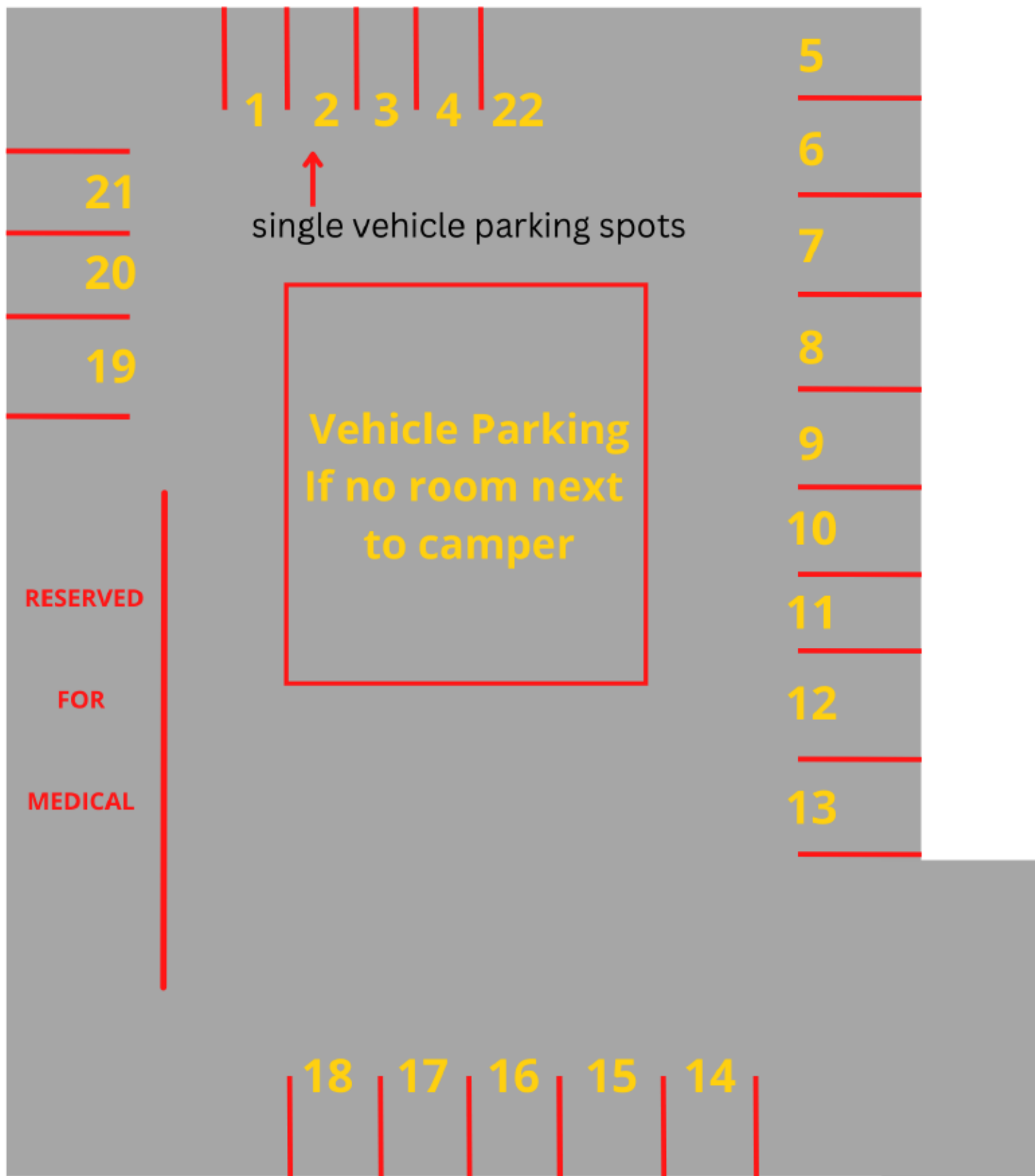
You'll choose your spot in both of these places upon your arrival to the canyon – Tenters may use non-assigned parking spots or the Overflow for vehicles



ZIP LINE CAMPGROUND

You can just go to your spot upon arrival to the campground.

The gate to PDC will be open during the weekend of 24:00 so you can enter & leave whenever.



Lighthouse Parking Lot

Each RV spot (5-21) is 2 parking spots wide



Catarina Cave Parking Lot

This is located just past the Old West Stables.

There will be 4 vehicles parked in this parking lot.

Please allow space for each vehicle to have a parking spot.

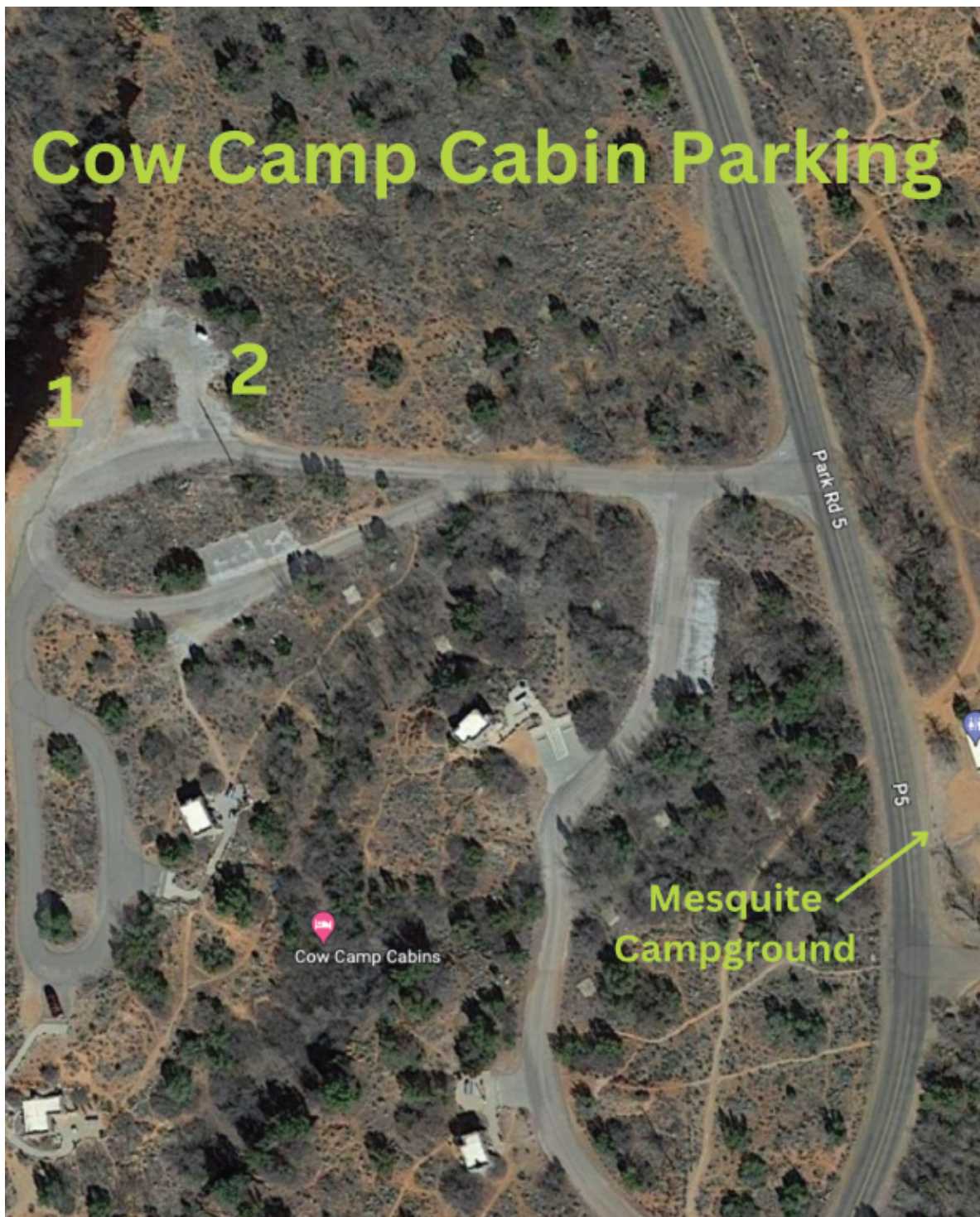
There are no fire rings, electricity, or water hookups here.



PULL OFF AREA CAMPING SPOT

No hookups or fire ring

Located between the Old West Stables &
Catarina Cave Parking Lot



COW CAMP

Located across from Mesquite Campgroup

No hookups or fire ring

Vehicle parking only